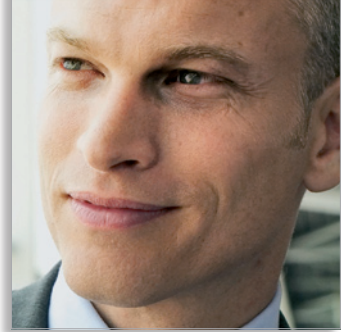




Philips  
Digital Pocket Memo  
with 4-position slide  
switch

Pocket Memo



LFH 9380



## Simply move forward

You grew fond of your tape-based recorder but want to increase efficiency? This is where the Digital Pocket Memo 9380 comes in. With the professional 4-position slide switch you can hold on to your working habits, and all the same enhance your dictation workflow. Due to virtually unlimited recording capacity with an exchangeable SD card and excellent sound quality you will not miss your analog device at all. The Digital Pocket Memo 9380 comes with SpeechExec Dictate, the easy-to-use dictation download software from Philips. Now is the time to shift!

### Quick control

- 4-position slide switch for single handed operation
- Intuitive menu control with 'Smart buttons'
- Large backlit LC display for an at-a-glance overview

### Easy file handling

- SpeechExec Dictate software ensures easy installation and efficient handling of voice files on your PC
- Automatic file download via USB for quick transcription

### Designed around industry standards

- Compatible with industry-standards such as SD card, mini-USB socket, AAA batteries, 3.5 mm headphone and microphone sockets
- Supports the compact .dss file format, the industry standard for digital recording



**PHILIPS**  
sense and simplicity

## Specifications

### Connectivity

- Docking connector: 8-pin female
- USB: Mini USB 2.0 female (full speed, 12 Mbit/s)
- DC in: 6 V
- Microphone: 3.5 mm, impedance 2 k $\Omega$
- Headphone: 3.5 mm, impedance 8  $\Omega$  or more
- Memory card: Secure Digital (SD) and Multimedia card (MMC)

### Display

- Type: TFT-Transreflective
- Diagonal screen size: 1.71 in. / 44 mm
- Resolution: 128 × 128 pixels
- Backlight color: white

### Recording specifications

- Recording format: .dss (Digital Speech Standard)
- Memory type: Secure Digital (SD)/Multimedia Card (MMC) up to 2 GB
- Recording modes: Standard Play (SP)  
Long Play mobile (LPm)
- Recording time (SP/LP):  
44 / 65 hours with 256 MB card  
349 / 523 hours with 2 GB card
- Sampling frequency:  
Standard Play mode: 12 kHz  
Long Play mode: 8 kHz
- Compression rate:  
Standard Play mode: 13.5 kbit/s  
Long Play mode: 9 kbit/s
- Frequency response:  
Standard Play mode: 200 to 5500 Hz  
Long Play mode: 200 to 3500 Hz

### Speaker

- Built-in: 30 mm round dynamic speaker
- Output power: 200 mW

### Green specifications

- Compliant to 2002/95/EC (RoHS)
- Lead-free soldered product

### Operation conditions

- Temperature: 5° - 45° C / 41° - 113° F
- Humidity: 10 % - 90 %

### Power

- Battery type: two AAA batteries (LR03 or R03) or two Philips AAA Ni-MH rechargeable batteries (LFH 9154)
- Battery life (Standard Play mode):  
17 hours with Philips Ni-MH rechargeable battery  
15 hours with Philips alkaline battery
- Charging time (full charge): 2.5 hours with optional rechargeable batteries and power supply

### Specifications

- Product dimensions (W x D x H):  
50 x 116 x 17 mm / 2.0 x 4.6 x 0.7 in.
- Weight: 106 g / 3.7 oz, including two Philips AAA batteries

### PC requirements (SpeechExec)

- Minimum: Pentium III, 500 MHz and 512 MB RAM
- Recommended: Pentium IV or similar, 1 GHz and 1 GB RAM
- Hard disk space: 100 MB for SpeechExec, 250 MB for Microsoft .NET Framework
- Sound card and headphone output or speakers
- 1 free USB port
- Recommended minimum transfer rate for LAN: 100 Mbit/s
- Operating system: Windows Vista (SP1), Windows XP (SP3)

### Package contents

- Digital Pocket Memo 9380
- Speech Exec Dictate software
- Philips Secure Digital (SD) memory card
- 2 Philips AAA batteries
- USB cable
- Pouch
- User manual
- Quick start guide

### Accessories

- USB Docking Station 9120
- Philips rechargeable AAA Batteries 9154
- Philips Power Supply 9146
- Philips Secure Digital (SD) Memory Card

## Product highlights

### SpeechExec Dictate

*SpeechExec Dictate is the perfect download software to manage voice files. The intuitive user interface makes job retrieval simple and fast, and the job status information allows the tracking of all the work in progress.*

### Smart Buttons

*Two smart buttons let you scroll through menu options and quickly make selections.*

### Large Display

*A large graphical display lets you view all file information, such as keywords (author name), length of dictation, position within the file, and other vital information at a glance. A backlit display shows all information, even in poor lighting conditions.*

### Intuitive design

*The Digital Pocket Memo's asymmetrical and ergonomic design delivers unparalleled user-friendly operation. All buttons are within the sweep-angle of the thumb; a separate on/off switch and the popular 4-position slide switch let you work in the most familiar way.*

### Designed around standards

*The Digital Pocket Memo is designed around standardized technologies. From SD (or MMC) cards, mini-USB cables, batteries and sockets to the industrystandard .dss file format for speech processing, Philips employs non-proprietary accessories and technologies for the ultimate compatibility.*

### Digital Speech Standard (.dss)

*The .dss file format is the international standard for professional speech processing. Offering excellent audio quality for recorded voice, .dss files allow a high compression rate, reduced file sizes, network traffic and required storage capacity. The format also allows additional information, such as the author name, to be stored in the file header, further facilitating file organization.*



Issue date 2009-07-09  
Version 1.0

© 2009 Koninklijke Philips Electronics N.V.  
All rights reserved.

Specifications are subject to change without notice.  
Trademarks are the property of Koninklijke Philips Electronics N.V. or their respective owners.

[www.philips.com/dictation](http://www.philips.com/dictation)